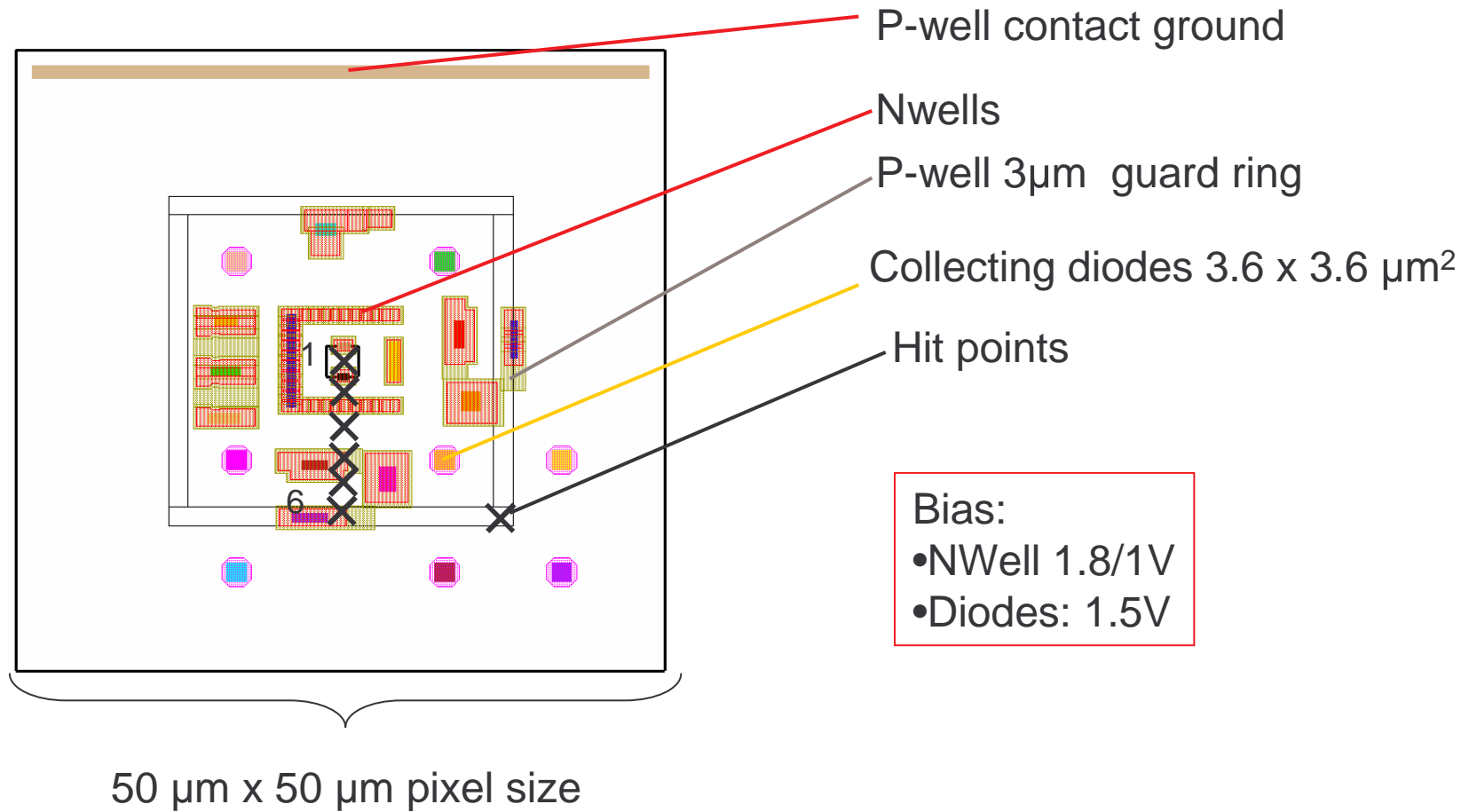
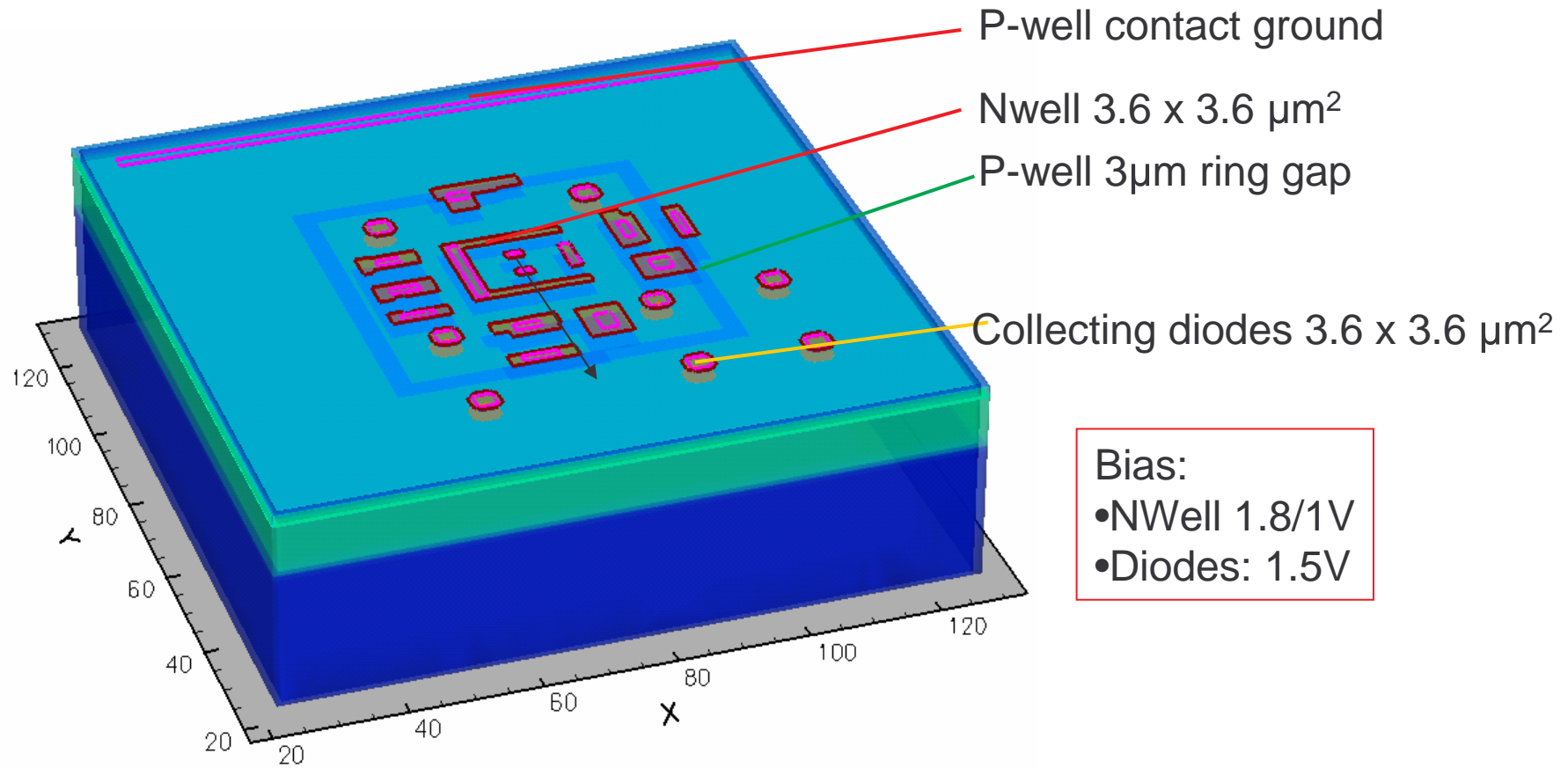


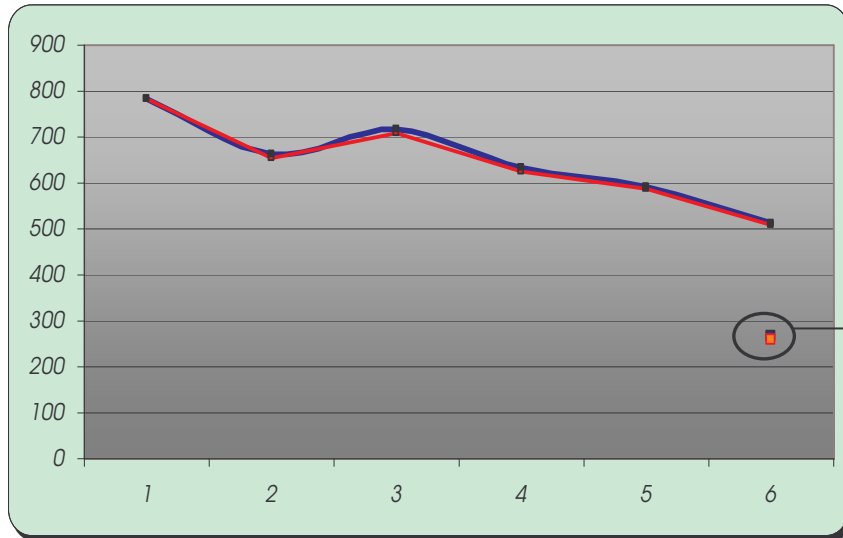
CALICE pixel Deep P-Well results



CALICE pixel Deep P-Well results



CALICE pixel Deep P-Well results

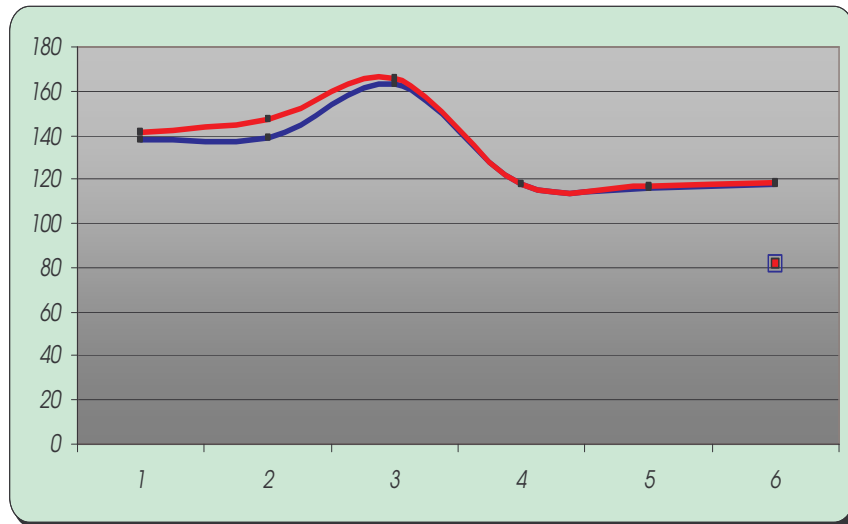


Guard ring

NO Guard ring

$\approx 260 e^-$

Charge collected



Collection time

CALICE pixel Deep P-Well results

Conclusions

- The final layout shows good performances in terms of charge collection, along the sampled line: the worst case is again near the corner.
- The 3 μm guard ring version does not show remarkable differences (a few e^-) compared to the no guard ring: however, it might be beneficial for thinner epitaxial thickness
- Collection time still well below 200 ns in both cases,
- **Next step:**
- Complete layout simulation with and without 3 μm PW guard ring
- Different size diodes simulations (7.6 / 1.8 μm)