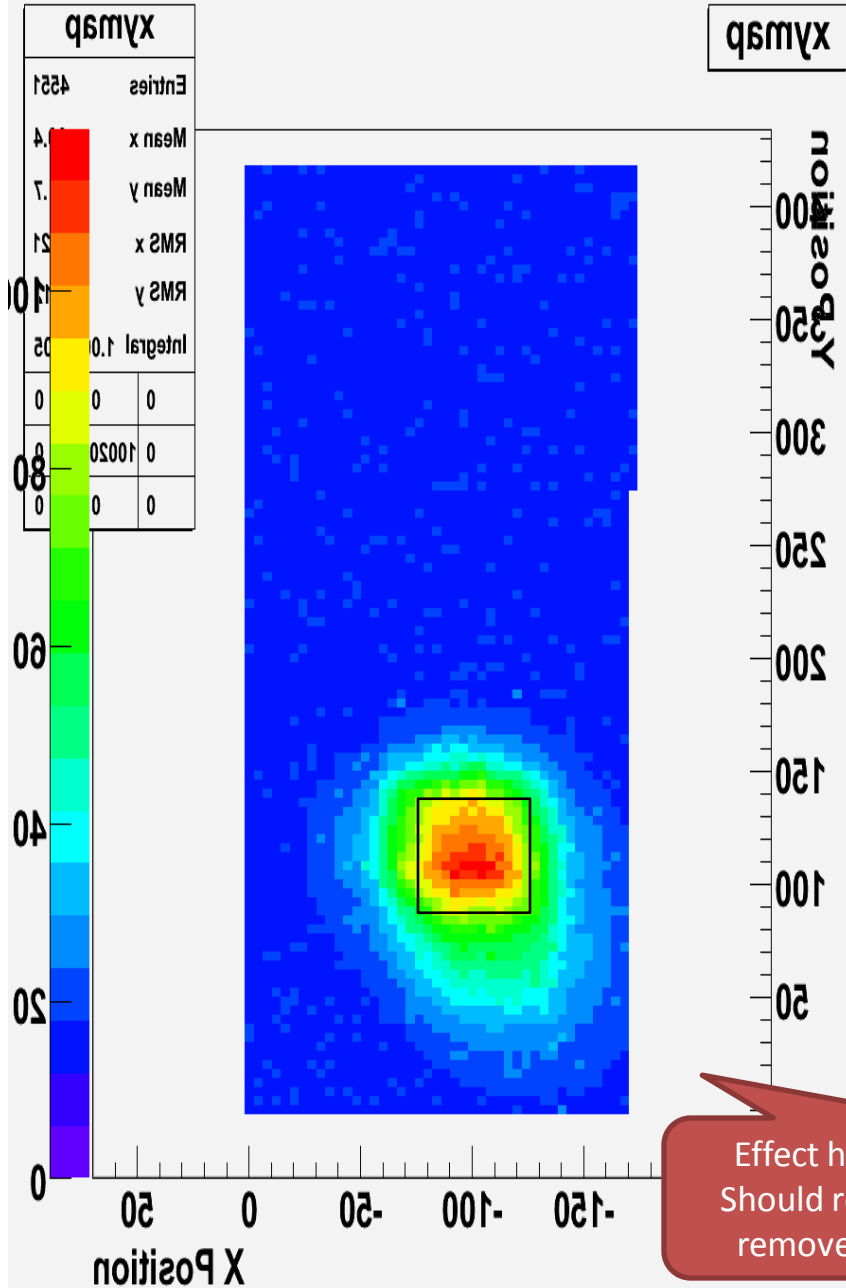


TPAC1.1 Testing

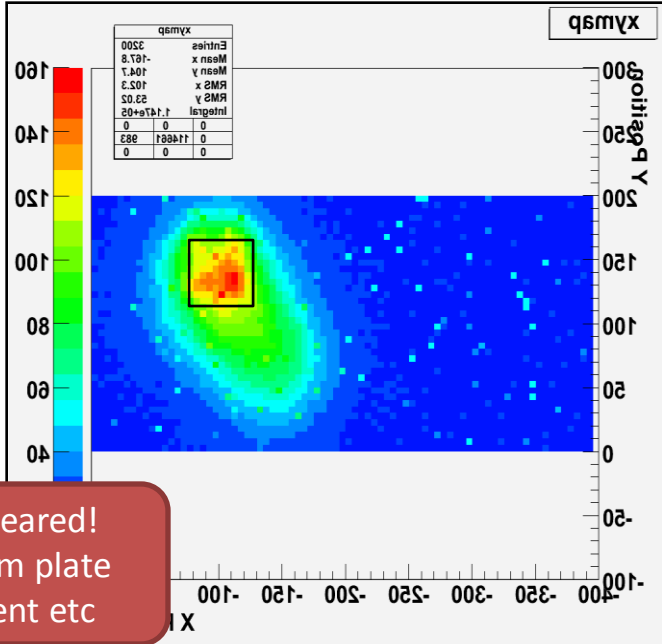
JC/Feb 6th

Laser Scan: Test Pixel

- Test pixels were mounted specially in centre of pcb hole
- 2um spot
- 4um steps
- 50 measurements/pt

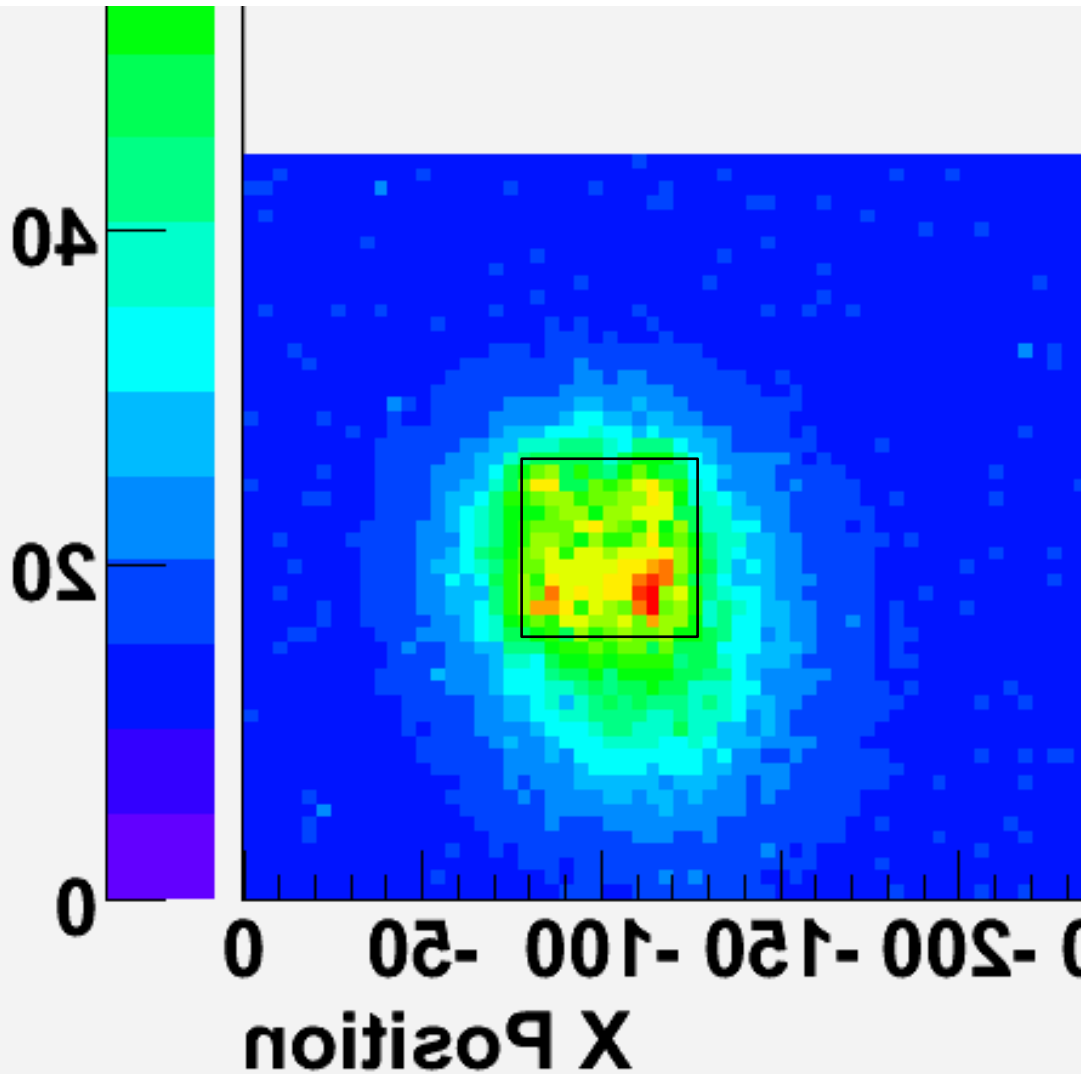


→ Before:



Effect hasn't entirely disappeared!
Should repeat with aluminium plate removed and check alignment etc

Laser Scan: Repeated!



- Removed aluminium back plate
- Black plastic under sensor

Next:

- Rotate sensor 90°
- Repeat

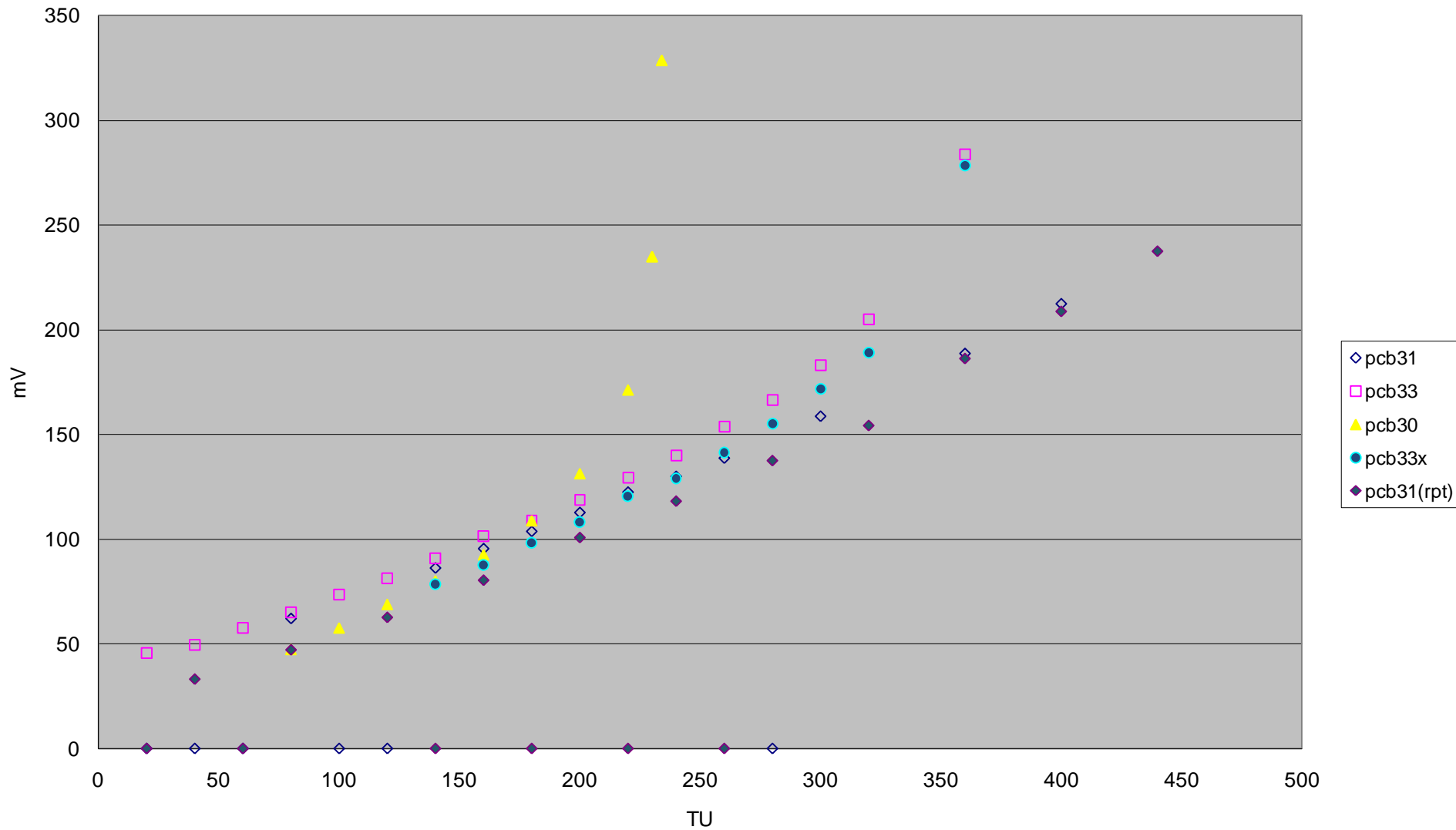
TU calibration

- Method

- Fire laser at ~centre of (v1.1) test pixel
- Set fixed threshold for test pixel
- Adjust laser intensity
 - Record mean signal magnitude
 - can adjust aperture or intensity to get larger signals
 - Record probability of hit from scope (>300 samples)
 - Plot s-curve of $p(\text{hit})$ against signal magnitude
 - Estimate $p(\text{hit})=0.5$ for each threshold setting
 - Plot TU versus signal magnitude
 - Repeat for several sensors...

TU calibration plot: all data

TU calibration



TU calibration plot: refined method

TU calibration

