

CALICE-UK Status

Marcel Stanitzki
Rutherford Appleton Laboratory

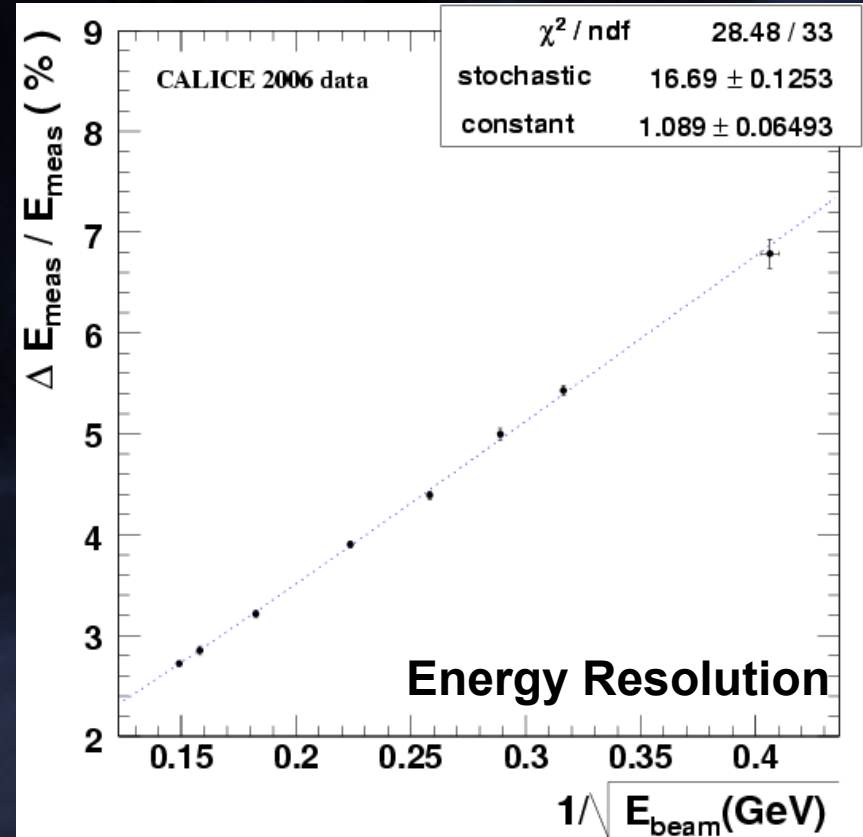
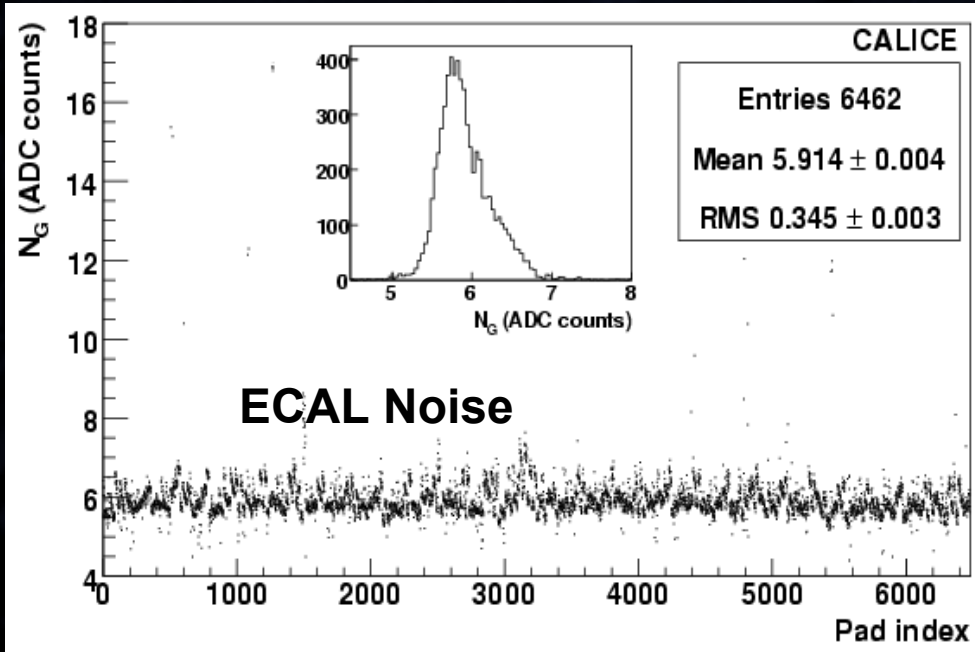
Instead of a talk ...

- CALICE-UK
 - Birmingham, Cambridge, Imperial, Manchester, RAL, Royal Holloway, UCL
- 5 Work packages
 - Test
beams/DAQ/MAPS/Mechanics/Simulation
- Funding till April 2009 (Shutdown package)
 - Way less than originally planned

WP1 Test beams

- Successful testbeam campaign
 - 2006 DESY & CERN
 - 2007 CERN
 - 2008 FNAL
- UK heavily involved before the budget cuts
 - DAQ/Analysis

Some results



WP2 DAQ

- Work has been focused on providing DAQ for EUDET
- Still some work on High-speed detector links

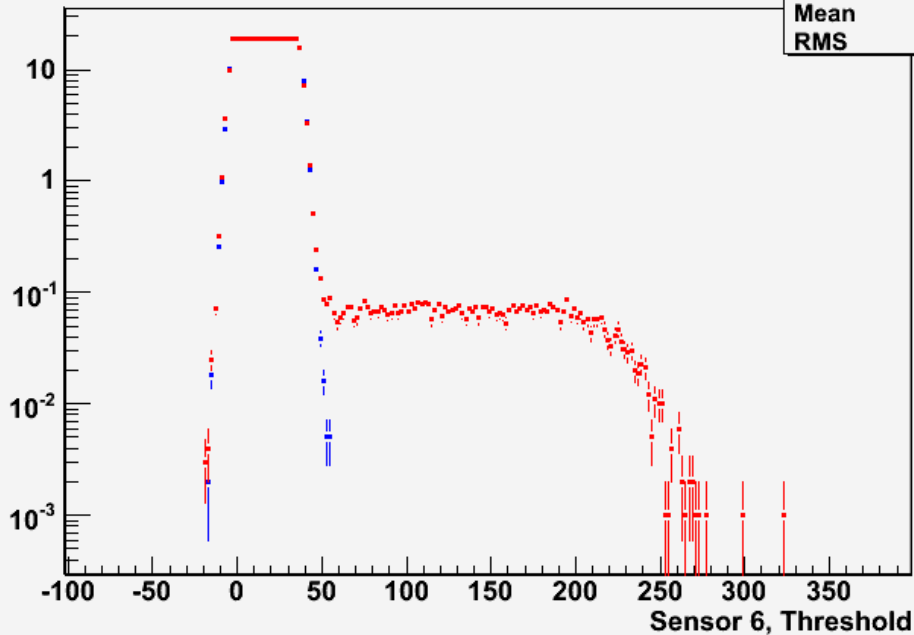


WP3 MAPS

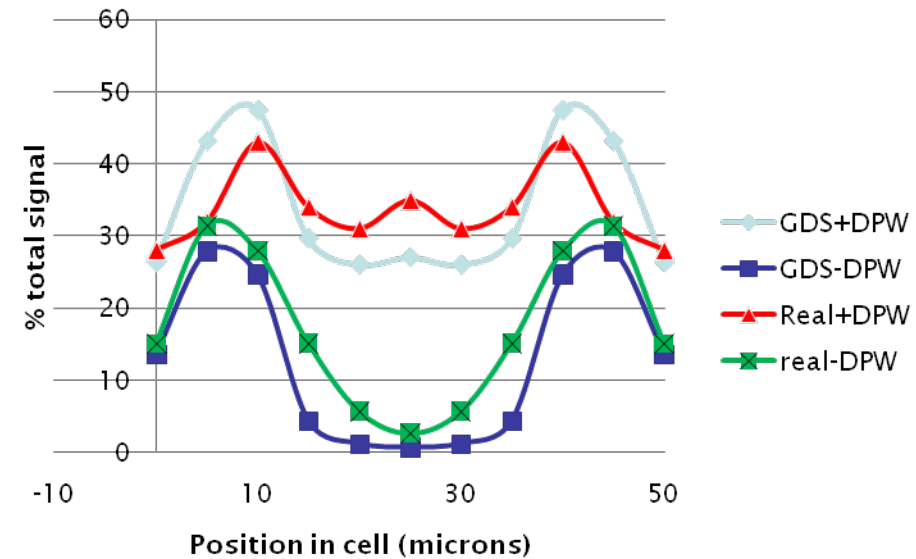
- Continued testing of TPAC1
- Designed and submitted TPAC 1.1
 - received back 3 weeks ago
 - already started testing
- Continue working on the chips
- Will go for another testbeam in Winter 2009

Some results

Run 464652, Region 0, Number of words vs Sensor 6, Threshold



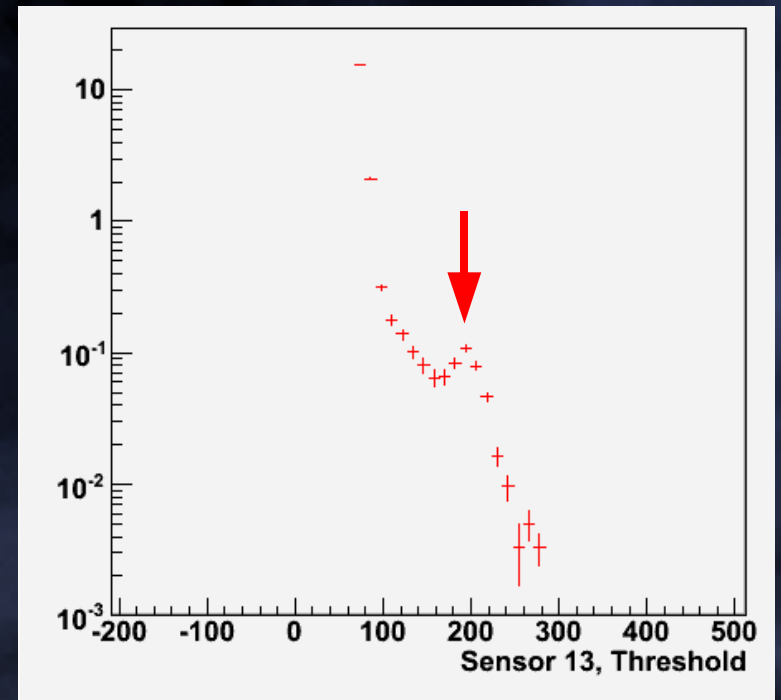
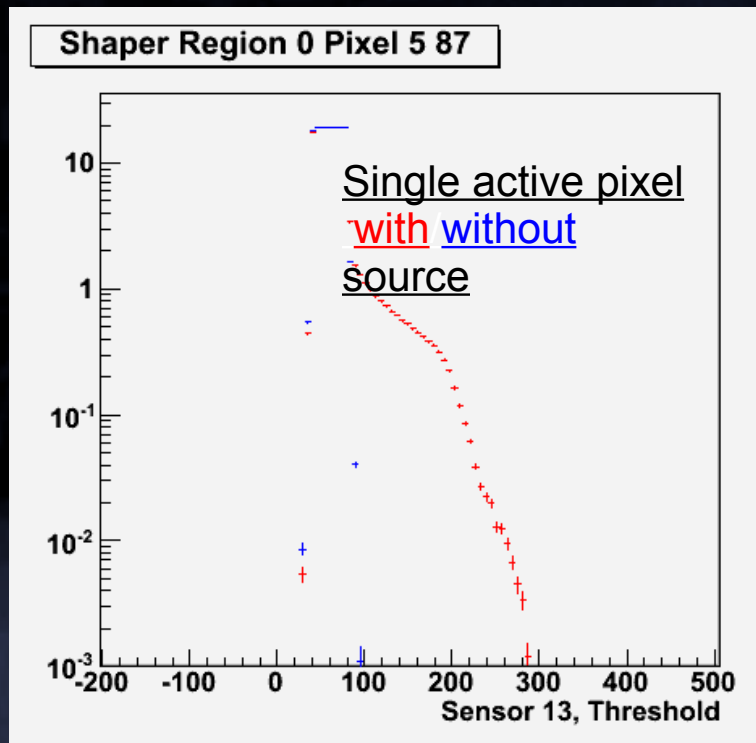
Profile B; through cell



Single active pixel
with/without laser
firing

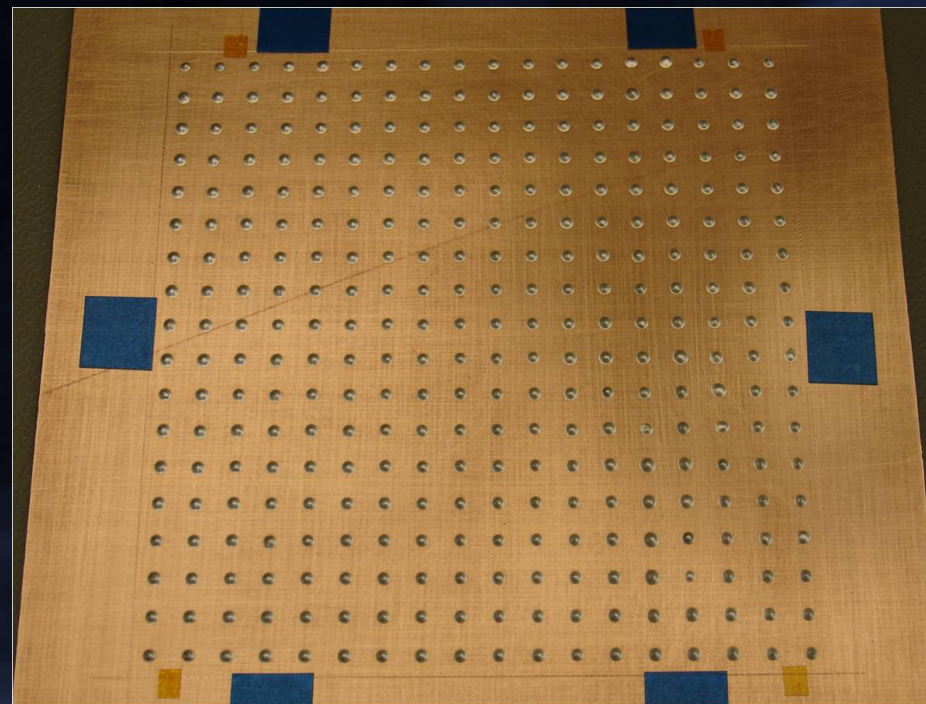
More results

- use ^{55}Fe source on Pixel Array



WP4 Mechanics

- After STFC cuts
 - Focus on detector slab assembly
 - Contribute to EUDET module
- Glue studies continue



WP5 Simulations

- CALICE-UK actively involved in
 - SiD
 - ILD
- Lots of work on detector optimization
- Physics studies continue
 - ZHH
 - WW/ZZ

The future

- STFC's Detector R&D line
- Two bids with CALICE-UK participants
- SPIDER
 - Pixel R&D collaboration
 - Birmingham, Bristol, Imperial, Oxford, RAL
- Generic DAQ R&D
 - UCL et. al.

The PFA bid ...

- Proposal by Cambridge and RAL
- already submitted 18 month ago
- reviewed 1 year ago and approved
- Sitting in Swindon ever since
- We've been asked to present it again ..,

Summary

- CALICE-UK will be finishing April 2009
 - We are in ramp-down mode
 - Still lots of new results
- Several bids for Detector R&D
 - We plan to continue our R&D