

# sensicam qe cooled digital 12bit CCD camera system

- super quantum efficiency up to 65%
- extremely low noise, down to  $4e^-$  rms
- 12bit dynamic range
- thermo-electrical cooling (Peltier) down to  $-12^{\circ}\text{C}$
- high resolution (1376 x 1040pixel)
- shutter / exposure times from 500ns - 1000s
- binning (horizontal & vertical)
- region of interest (ROI)
- 10 frames per second at full CCD resolution
- remote control up to 1500m distance (with fiber optic link)
- free software camware included



# sensicam qe

This high performance cooled digital 12bit CCD camera system comprises advanced CCD and electronics technology. The system features thermo-electrical cooling of the image sensor (down to  $-12^{\circ}\text{C}$ ), extremely low noise (down to  $4\text{e}^-$  rms) and an outstanding quantum efficiency, which achieves a high spectral sensitivity in general and especially in the NIR. Exposure time modes (software selectable) range from 500ns (fast shutter) to 1000s (long exposure). A high speed serial data link connects the system to the PC (fiber optic link available). This low light camera system is perfectly suited for many sensitive and low noise imaging applications, like fluorescence imaging, confocal & light microscopy etc.

## technical data

	unit	setpoint	sensicam qe
resolution (hor x ver) <sup>1</sup>	pixel		1376 x 1040
pixel size (hor x ver)	$\mu\text{m}^2$		6.45 x 6.45
sensor format / diagonal	inch / mm		2/3" / 11.14
peak quantum efficiency	%	@ 500nm typical	62
full well capacity	e-		18 000
image sensor			ICX285AL
dynamic range	dB	@ gain low, CCD + camera	70.1
dynamic range A/D <sup>2</sup>	bit		12
readout noise	e- rms	@ gain high @ gain low	4..5 5..6
imaging frequency, frame rate	fps	@ full frame @ binning 2x2	10.0 19.8
pixel scan rate	MHz		16
A/D conversion factor	e- / count	@ gain high @ gain low	2 4
spectral range	nm		290..1100
exposure time	s		500ns..1000s
anti-blooming factor		@ standard light mode / @ low light mode @ 100ms exposure time	> 400 / > 4
smear	%		<0.002
binning horizontal	pixel		1,2,4,8
binning vertical	pixel		1,2,4,8,16,32
region of interest	pixel		down to 32x32
extinction ratio		@ 1ms exposure time	1 : 2000
non linearity	%	full temperature range	< 1
uniformity darkness DSNU <sup>3</sup>	count	@ 90% center zone	1

## technical data

uniformity brightness PRNU <sup>4</sup>	%		0.6
trigger, auxiliary signals		internal / external	software / TTL level
power consumption	W		36
power supply	VAC		90..260
mechanical dimensions camera (w x h x l)	mm <sup>3</sup>		93 x 78 x 210
mechanical dimensions power supply (w x h x l)	mm <sup>3</sup>		84 x 50 x 155
weight	kg	camera	1.6
operating temperature range	°C		+5..+40
operating humidity range	%	non condensing	10..90
storage temperature range	°C		-20..+70
optical input			c-mount with adjustable back focal length
optical input window			fused silica
data interface			PCI local bus, Rev. 2.1, burst rate 132 MByte/s
CE certified			yes
cooled CCD temperature	°C		-12
cooling method			2 stage Peltier cooler with forced air cooling
modes		light mode / gain mode	standard - low light / standard - high

[1] horizontal versus vertical

[2] Analog-to-Digital-converter

[3] dark signal non-uniformity

[4] photo response non-uniformity

#### data transfer to PC

standard: twin coaxial cable (5m)  
optional: fiber optic link (10m - 1500m)

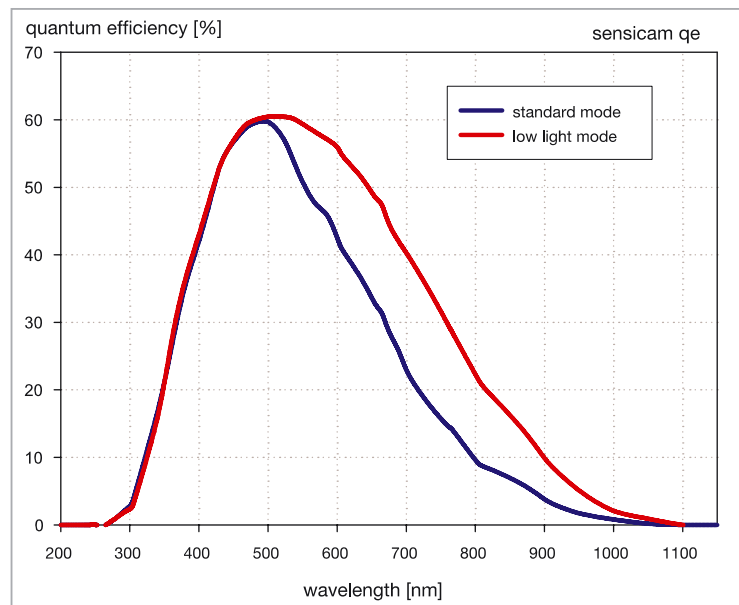
#### software

camware software for camera control, display, storage and printing of image data under Windows9x, ME, XP, WindowsNT, Windows2000; software development kit (SDK) with demo software for the above mentioned operating systems; TWAIN drivers; drivers or plug-ins for popular third party image processing products

#### options

hardened against high magnetic fields  
water cooling  
external fan cooling  
custom-made versions

## quantum efficiency



(measured by pco).

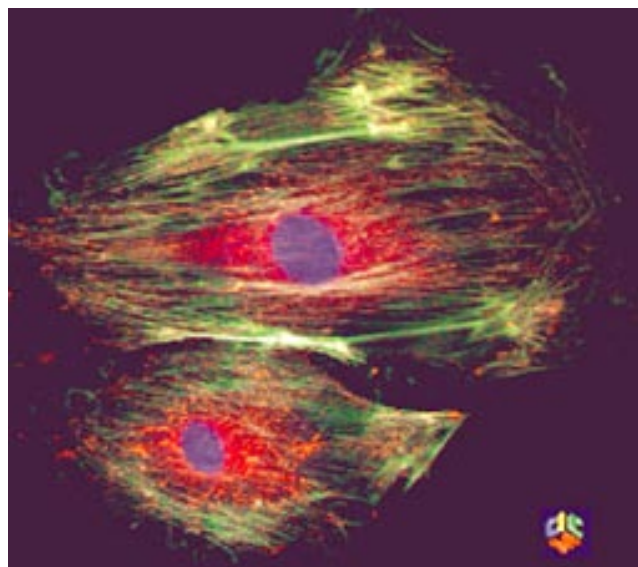
## areas of application

- laser induced fluorescence
- fluorescence microscopy
- electron microscopy
- Red and NIR fluorescence applications
- bioluminescence / chemoluminescence
- spectroscopy
- gel imaging
- ion imaging
- low light level imaging
- semiconductor quality control
- imaging of bio markers (e.g. green fluorescent protein, GFP)

# examples of applications

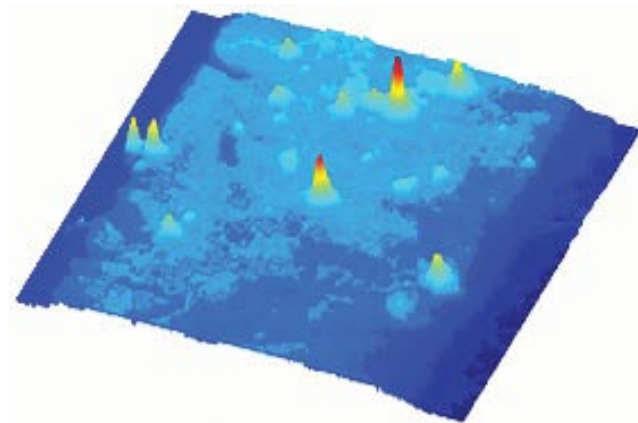
Fluorescence in-situ hybridization (FISH) of an endothelial cell.

...with friendly permission of:  
Cornell Integrated Microscopy Center, USA



An area of  $50\mu\text{m} \times 50\mu\text{m}$  is visible, the bright peaks correspond to single Terrylene molecules - single-molecule spectroscopy at low temperatures.

...with friendly permission of:  
Institute for Experimental Physics IV, L. Kador & M. Bauer, University Bayreuth, Germany,  
[www.ep4.phy.uni-bayreuth.de](http://www.ep4.phy.uni-bayreuth.de)



## contact

PCO AG  
Donaupark 11  
93309 Kelheim, Germany

fon +49 (0)9441 2005 50  
fax +49 (0)9441 2005 20  
info@pco.de  
www.pco.de

The Cooke Corporation  
6930 Metroplex Drive  
Romulus, Michigan 48174  
USA  
tel 248 276 8820  
fax 248 276 8825  
info@cokecorp.com  
www.cookecorp.com

sensicam qe product sheet 02/2005  
subject to changes without prior notice ©PCO AG, Kelheim