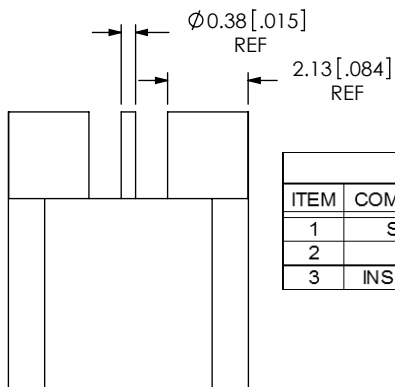


**THIS PRODUCT MANUFACTURED WITH LEAD-FREE PROCESSING**

**DESIGNED & DIMENSIONED IN MILLIMETERS [INCHES]**

**SMP-PX-P-XX-ST-EM3**

DO NOT SCALE FROM THIS PRINT



INTERFACE	SMP-PX-P-X-ST-EM3-SHL
-F	SMP-PF-P-X-ST-EM3-SHL
-L	SMP-PL-P-X-ST-EM3-SHL
-S	SMP-PS-P-X-ST-EM3-SHL

GENDER  
-P: PLUG

INTERFACE  
-F: FULL DETENT  
-L: LIMITED DETENT  
-S: SMOOTH BORE

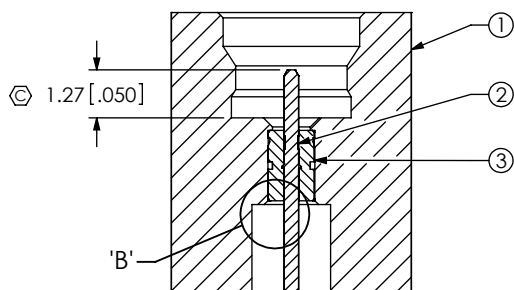
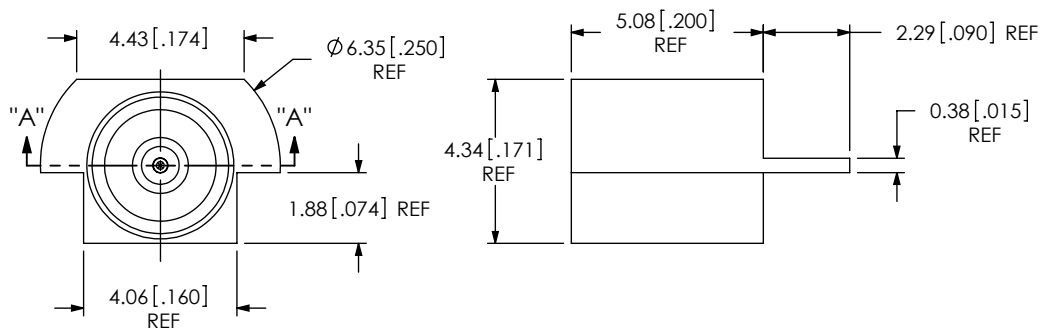
TYPE  
-P: PCB

TERMINATION  
-EM3: DROP-IN EDGE MOUNT

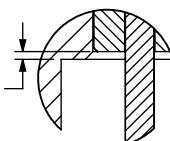
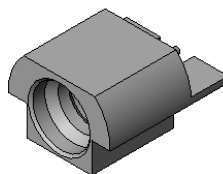
ORIENTATION  
-ST: STRAIGHT

PLATING SPECIFICATION  
(VALUES GIVEN ARE IN MICRO-INCHES)  
-HE: 30µ" GOLD ON CENTER CONTACT  
50µ" GOLD ON OUTER CONTACT  
-HH: 30µ" GOLD ON CENTER CONTACT  
30µ" GOLD ON OUTER CONTACT  
(SEE TABLE 1 & NOTE 4)

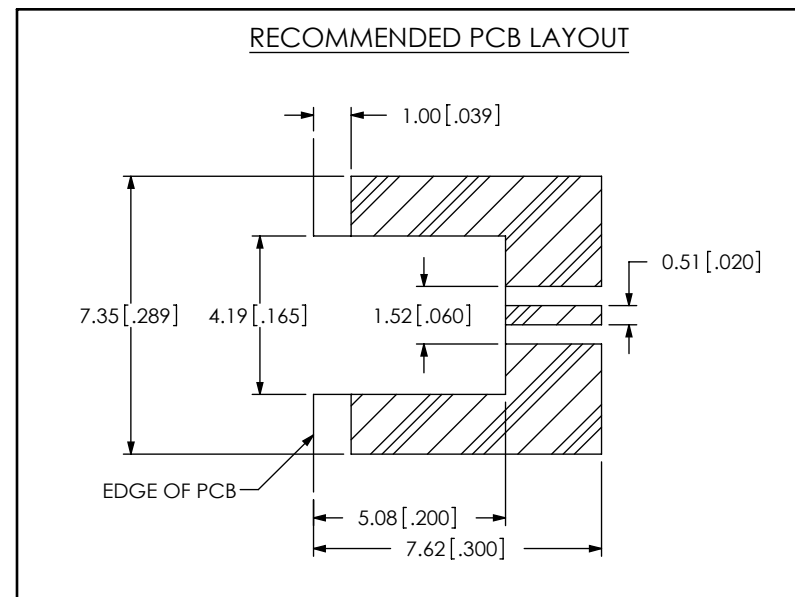
ITEM	COMPONENT	-HE	-HH
1	SHELL	SMP-PX-P-E-ST-EM3-SHL (SEE TABLE 2)	SMP-PX-P-H-ST-EM3-SHL (SEE TABLE 2)
2	PIN	SMP-P-P-H-ST-EM3-PIN	
3	INSULATOR	SMP-P-P-ST-EM3-INS	



SECTION "A"- "A"



DETAIL 'B'  
SCALE TO : 1



NOTES:

- ⊕ REPRESENTS A CRITICAL DIMENSION.
- MINIMUM PUSHOUT FORCE FOR CENTER CONTACT: 6.67N [1.5 LB].  
INSULATOR: 6.67N [1.5 LB].
- PRODUCT TO BE PACKAGED PER PACKING STANDARD CO-HD-WI-3040-M.  
TRAY: TY-SMA001-1  
COVER: TY-SMA001-2  
200 PARTS PER TRAY (2 PARTS PER POCKET)
- PLATING THICKNESS ON OUTER CONTACT MUST BE 30µ" MIN, TO AVOID REFLOW WICKING.

UNLESS OTHERWISE SPECIFIED, DIMENSIONS ARE IN MILLIMETERS.  
TOLERANCES ARE:  
DECIMALS ANGLES  
X.X: ±0.3 [0.1] 5°  
X.XX: ±0.13 [0.05]  
X.XXX: ±0.051 [0.020]

**PROPRIETARY NOTE**  
THIS DOCUMENT CONTAINS INFORMATION CONFIDENTIAL AND PROPRIETARY TO SAMTEC, INC. AND SHALL NOT BE REPRODUCED OR TRANSFERRED TO OTHER DOCUMENTS OR DISCLOSED TO OTHERS OR USED FOR ANY PURPOSE OTHER THAN THAT WHICH IT WAS OBTAINED WITHOUT THE EXPRESSED WRITTEN CONSENT OF SAMTEC, INC.



520 PARK EAST BLVD., NEW ALBANY, IN 47150  
PHONE: 812-944-6733 FAX: 812-948-5047  
e-Mail: info@SAMTEC.com code 55322

**MATERIAL:** DO NOT SCALE DRAWING SHEET SCALE: 5:1  
PIN, SHELL: BRASS  
DIELECTRIC: PTFE

**DESCRIPTION:**  
SMP EDGE MOUNT PLUG - 50 OHM

DWG. NO.  
**SMP-PX-P-XX-ST-EM3**

BY: T MEEK 10/29/2010 SHEET 1 OF 1