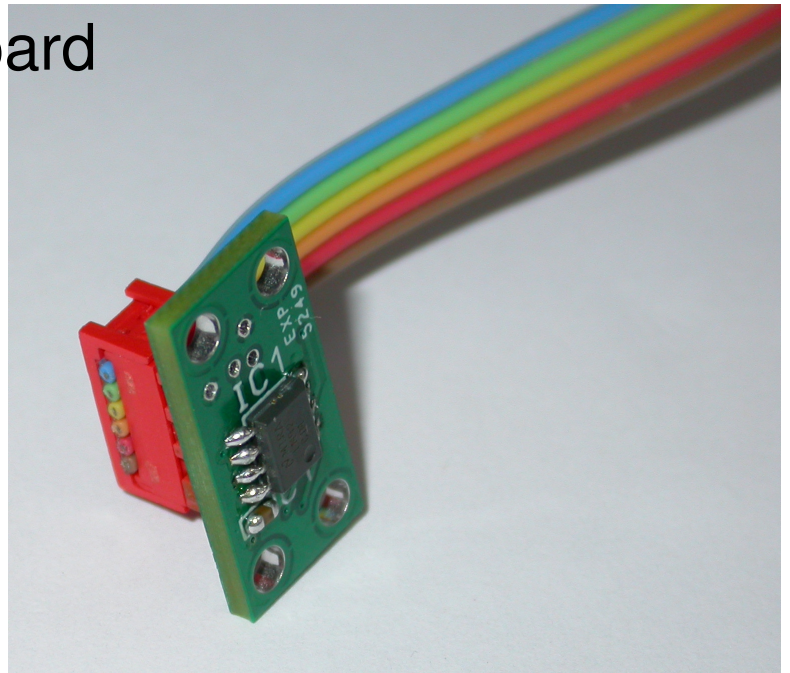
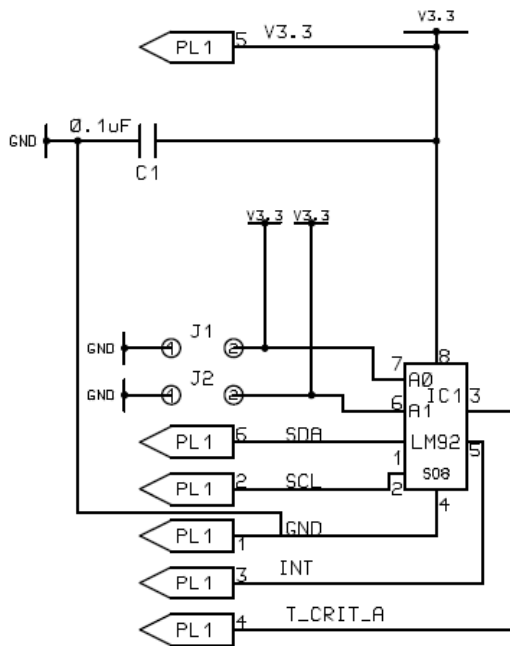
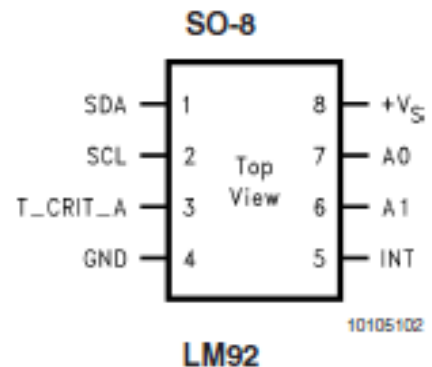


LM92 temperature board

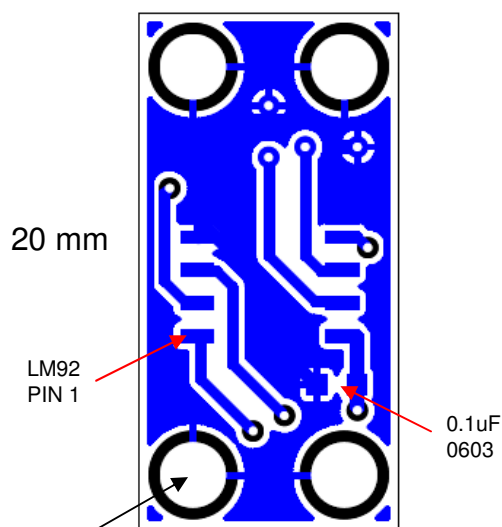


PL1 (socket on board) RS part no. 366-1737
 [Tyco Electronics (or AMP): 7-188275-6]
 mating plug on cable RS part no. 341-7401
 [Tyco Electronics (or AMP): 7-0215083-6]



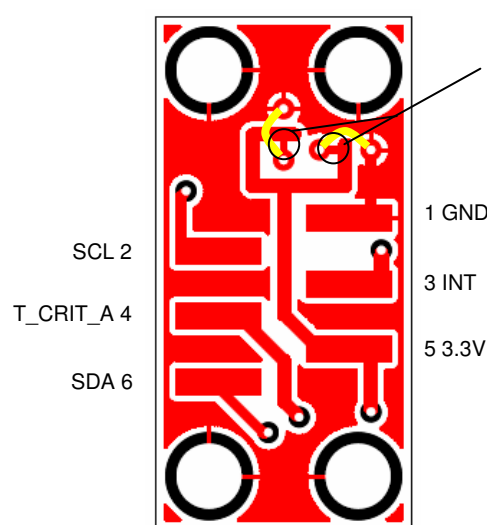
BOTTOM COPPER AS VIEWED THROUGH BOARD

10 mm



2.5 mm dia.
 holes for
 2 mm screws

TOP COPPER AS VIEWED ON SURFACE OF BOARD



TO CHANGE BOARD ADDRESS, CUT ONE (OR BOTH) TRACKS WHERE CIRCLED AND SOLDER ONE (OR TWO) WIRE JUMPERS AS SHOWN IN YELLOW

with bottom left hand corner of board as (X,Y)=(0,0), the hole centres are at (2.1,2.1), (2.1,17.9), (7.9,17.9) and (7.9,2.1)
 [dimensions in mm]